

THE MARLBOROUGH  
THEATRE

# MARLBOROUGH

FRINGE  
PROGRAMME

MAY 2012



PROUDLY SUPPORTED BY



BRIGHTON  
FRINGE  
2012


drinkin  
brighton



## WELCOME TO... THE BROCHURE OF TOMORROW - AND YOU LOOK LIKE YOU HAVEN'T AGED A BIT!

THE YEAR IS 2012. THE MARLBOROUGH THEATRE IS A BASTION OF HOPE IN BRIGHTON'S HEAVING FESTIVAL METROPOLIS. JOIN US DURING BRIGHTON FRINGE FOR AN ELECTRIFYING VOYAGE INTO THE UNKNOWN.

PROPEL YOURSELF TOWARDS NEW THEATRICAL EXPERIENCES SUCH AS THE WORLD HAS YET TO SEE... 26 SHOWS AND 84 PERFORMANCES AWAIT YOU WITHIN THE LEGENDARY WALLS OF THE MARLBOROUGH THEATRE. WITH STARS LIKE PROFESSOR ELEMENTAL, BETTE BOURNE & A RATHER UNCANNY MAX MILLER ON THE BILL, BE SURE TO JOIN US FOR THE PAST, PRESENT AND FUTURE OF ENTERTAINMENT.

ALSO, KEEP AN EYE OUT FOR THE  LOGO WITHIN THIS FINE BROCHURE. WE ARE BOTH

PROUD AND THRILLED TO ANNOUNCE THAT TWO OF OUR SHOWS (A RIGHT PAIR AND HOW TO READ MINDS AND INFLUENCE PEOPLE) HAVE BEEN PICKED OUT AS HIGHLIGHTS OR 'I LIKES' BY DAVID LISTER, ARTS EDITOR OF **THE INDEPENDENT** AND **i**. WE THINK THEY ARE WORTH A LOOK TOO!

WE ARE DELIGHTED TO BE CO-PRODUCING **DIP YOUR TOE** WITH OUR FRIENDS AT THE NIGHTINGALE THEATRE. KEEP YOUR EYES PEELED FOR SPECTACULAR PERFORMANCES HAPPENING INSIDE BEAUTIFUL BATHING MACHINES SCATTERED ACROSS THE CITY THROUGHOUT BRIGHTON FRINGE.

SIGNING OFF, DAVID SHEPPEARD, TARIK ELMOUTAWAKIL & LIBERTY MARTIN THE MARLBOROUGH THEATRE TEAM

## CONTENTS

THEATRE	6
WORKSHOPS	11
COMEDY	12
CABARET	14
MUSIC	14
DIP YOUR TOE	18

## HOW TO BOOK

You can buy tickets for all Marlborough Theatre Fringe events in advance from:  
**www.brightonfringe.org**  
or by calling the **fringe box office** on:  
**01273 91 72 72**

Furthermore, you can now pop into the **brand new Brighton Fringe Box Office** (formerly, Past Times, 54 North Street, Brighton BN1 1RH) to purchase tickets for any Brighton

Fringe show. Open throughout April and May, 7 days a week, its the convenient and easy way to purchase those much sought after tickets!

If available, a limited number of tickets for events will be on sale at the Marlborough Theatre's in-house box office 30 minutes before show time.


To avoid any disappointment we recommend that you book in advance.

## HOW TO FIND US

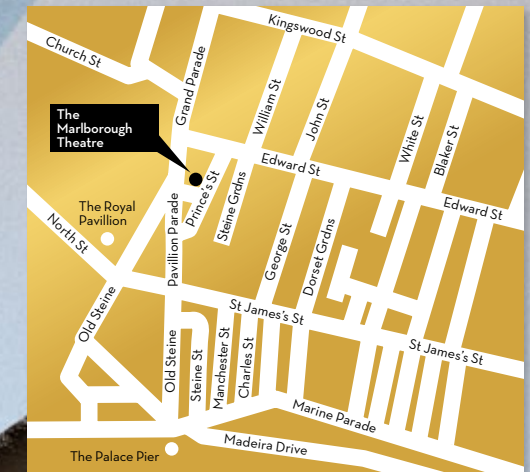
The Marlborough Theatre  
4 Princes Street  
Brighton  
BN2 1RD

**www.marlbroughtheatre.org.uk**

Email: **marlbroughtheatre@drinkinbrighton.co.uk**

 **@marlbroughbtn**

 **Marlborough Pub & Theatre**



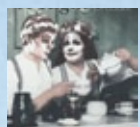


# PINKFRINGE

## PINK FRINGE IS HERE!

PRODUCING & SUPPORTING QUEER PERFORMANCE IN BRIGHTON

Pink Fringe is now working to bring you quirky and queer shows all year round – and it's been a heck of a busy year. In August 2011 we brought you *Parade, Protest, Perform!* during Pride weekend, which saw amazing artists out in the streets, in an interactive performance trail. Then we produced a series of fantastic events as part of *Culture Shock*, our first season of work presented outside the Brighton Fringe. We brought you the likes of **Jonny Woo**, **Lorraine Bowen** and **Chris Goode** and still had time to support some excellent artists to create new imaginings of a queer future for our project with Ovalhouse, *Mauve New World*.



A RIGHT PAIR



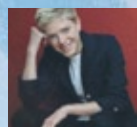
LILIES



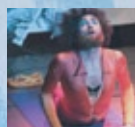
RACHAEL'S  
CAFÉ



TROUSER-  
WEARING  
CHARACTERS



MAE-DAY: I'M  
NOT WAVING,  
I'M DROWNING



SUN  
SALUTATIONS  
101™

Now it's time for another wonderful Brighton Fringe and we are delighted to be welcoming back **Bette Bourne**, this time with the inimitable **Paul Shaw**, the divine **Timberlina**, local favourite **Rose Collis** and a host of other wonders. So keep your eyes peeled for the **P** in this brochure which indicates events we think you'll like if you like a touch of pink.

Visit [www.pinkfringe.org.uk](http://www.pinkfringe.org.uk) for updates, blogs and further details.

Email: [info@pinkfringe.org.uk](mailto:info@pinkfringe.org.uk)



@pinkfringeuk



[www.facebook.com/  
pinkfringe](http://www.facebook.com/pinkfringe)

BOOK TICKETS: [WWW.BRIGHTONFRINGE.ORG](http://WWW.BRIGHTONFRINGE.ORG) / 01273 91 72 72

PRESENTING...

## THE MARLBOROUGH THEATRE'S INCREDIBLY TOUGH CROSSWORD COMPETITION!

We've created for your brilliantly quizzical minds a crossword of truly epic proportions. Some of the answers to the clues can be found within the pages of this brochure, while others can only be answered if you visit the theatre itself and delve a little deeper.

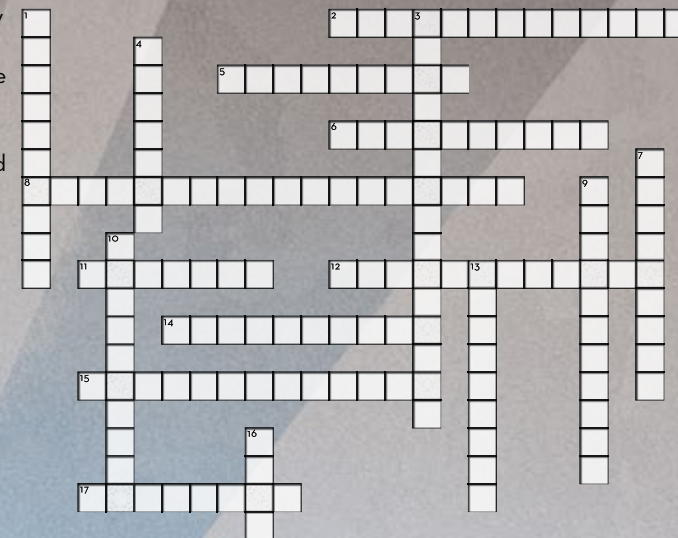
For your efforts, you can win two tickets to a show of your choice at The Marlborough Theatre during 2012, plus a bottle Hendrick's Gin (entrants must be over 18!)

Name .....

Email Address .....

Contact Telephone Number .....

To enter the draw, hand your completed crossword at the in-house box office, or post it to: The Marlborough Theatre Crossword Competition  
4 Princes Street, Brighton  
BN2 1RD



### ACROSS

2. Historic neighbouring building (5, 8)
5. Comedienne of Canada (3, 6)
6. Making pebbled beaches comfortable (10)
8. Victorian exploring chap-hop artiste (8, 9)
11. Escaping PM to be (7)
12. Household morsels (8, 4)
14. In-house producing company (4, 6)
15. The Marlborough's address (6, 6)
17. Who's eatery? (10)

### DOWN

1. A unique duo (1, 5, 4)
3. An oral assault (1, 4, 2, 3, 5)
4. Number of steps leading up to theatre (7)
7. He knows what you are thinking (4, 5)
9. Acting guru and festival director (6, 5)
10. New-age bearded drag queen (10)
13. Number of shows in The Marlborough's Fringe programme (6, 3)
16. Radiator colour in the auditorium (4)

WIN!

ADMIT ONE



BOOK TICKETS: [WWW.BRIGHTONFRINGE.ORG](http://WWW.BRIGHTONFRINGE.ORG) / 01273 91 72 72



## THEATRE



## 15% OF THE SEAGULL

MAYER AND MARTIN  
WWW.FIFTEEN-PERCENT.CO.UK

Mon 7th May 8.30pm  
Tues 8th May 8.30pm  
(1 hour)

One serious actor, one flippant amateur, one classic Chekhovian drama and a very naughty seagull combine in this hilarious and touching new play. Performed at Buxton Festival Fringe where the show was nominated for the 2011 Theatre Award, this comedy two-hander follows one star-struck woman's attempt to produce, direct and star in her own production of Anton Chekhov's *The Seagull*.

Tickets: £8.50/£6.50 concessions



## A RIGHT PAIR

STARRING BETTE BOURNE  
AND PAUL SHAW  
WWW.PINKFRINGE.ORG.UK

Sat 5th May 7.00pm  
Sun 6th May 7.00pm  
Sat 12th May 8.00pm  
Sun 13th May 8.00pm  
(1 hour)



This unique partnership have been together offstage and on since the 1970s. A whistle-stop tour of a life together exploring favourite scenes, obscure gems and other totally new ones. Join them for the triumphs and despair, the glittering high heel moments and down at heel moments of what it means to be – A Right Pair...

Tickets: £10.00/£8.00 concessions



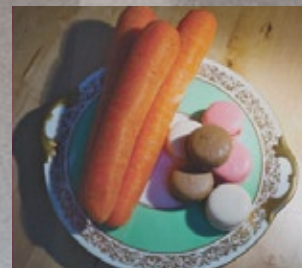
## DECKCHAIRS

FEMME FATALE THEATRE COMPANY  
WWW.FEMMEFATALETHEATRECOMPANY.COM

Sun 20th May 8.30pm  
Sat 26th May 4.00pm  
Sun 27th May 4.00pm  
(1 hour)

Two short playlets set beside the sea. In *Early Blight* witness a heart breaking exploration of a doomed mother/daughter relationship and in *Day Trippers* confident Beryl and prudish Doris get a few surprises on an annual work outing.

Tickets: £8.50/£7.50 concessions



## DOMESTIC BITS

LOTTA QUIZEEN PRESENTS  
WWW.LOTTAQUIZEEN.BIZ

Fri 4th May 5.00pm  
Sat 5th May 5.00pm  
Sun 6th May 5.00pm  
(1 hour)

Performance artists Katie Richardson and The Artist Spike invite you for a delicious hour of homely variety. Katie's Faking Baking & Playing House with top tips for enhancing your domestic life. Spike's White Rabbit has some unique ingredients for a fabulous Passion Stew.

Tickets: £5.00/£4.00 concessions



## HER RIGHT MIND

RUGGED ISAAC THEATRE  
WWW.RUGGEDISAACTHEATRE.CO.UK

Sun 20th May 6.45pm  
Mon 21st May 6.45pm  
Tues 22nd May 6.45pm  
(1 hour)

In order to manage her brother's Asperger's syndrome a woman carefully constructs a routine which balances obsession with escapism in the safety of their London home. *Her Right Mind* delves into the science of social interaction, and ultimately asks, who depends on who?

Tickets: £8.00/£6.00 concessions



## LILIES

BY MICHEL MARC BOUCHARD

GREENWICH THEATRE,  
WILD OATS, CITY LIGHTS  
WWW.GREENWICHTHEATRE.ORG.UK

Wed 16th May 7.00pm  
Thurs 17th May 7.00pm  
Fri 18th May 7.00pm  
Sat 19th May 6.30pm  
(1 hour 30 mins)

After forty years in prison Simon Doucet invites his old friend Bishop Bilodeau to visit, but instead of hearing a confession the Bishop is forced to relive an explosive evening from their past - the evening which cost Doucet forty years of his life. A powerful story of forbidden love and passionate revenge by award-winning Canadian writer Michel Marc Bouchard.

Tickets: £10.50/£8.50 concessions



## THEATRE



## RACHAEL'S CAFÉ

LITTLE FLY THEATRE  
WWW.LITTLEFLYTHEATRE.COM

Tues 15th May 9.00pm  
Wed 16th May 9.00pm  
Thurs 17th May 9.00pm  
(1 hour)

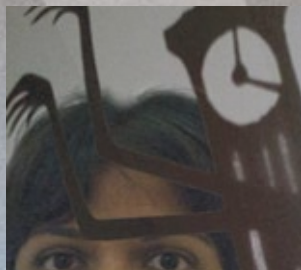
How does Eric Wining, a muscular, motorbike riding, church-going, 40-year-old salesman from the Midwest with a wife and three children, become Rachael Jones, owner of Rachael's Café in Bloomington, Indiana? A gentle, humorous, moving and true one-man play about one person's attempts to create an oasis where everyone is accepted - with no exceptions.

\*\*\*\* Whatsonstage

\*\*\*\* ScotsGay

\*\*\*\* Three Weeks

Tickets: £8.50/£6.50 concessions



## RADHA IS LOOKING GOOD / THE CLOCK

HIDE AND SEEK THEATRE  
WWW.HIDEANDSEEKTHEATRE.COM

Wed 9th May 8.30pm  
Thurs 10th May 8.30pm  
Fri 11th May 8.30pm  
(1 hour 30 mins)

Two one-woman shows. New writing devised from memories and imagination. Radha is an autistic girl's honest portrait. The words of a girl who never speaks. The Clock is a modern fairy tale told by one performer portraying four characters, using movement and shadow puppetry. "I want to see more work from this talented company as soon as possible." **Joanna Lumley**

Tickets: £8.50/£6.50 concessions



## RADIO

FIGHT AND HOPE

Fr 19th May 3.00pm  
Sat 20th May 3.00pm  
Mon 22nd May 8.30pm  
Tues 23rd May 8.30pm  
Wed 24th May 8.30pm  
(1 hour)

Radio tells the story of Charlie, a young man trying to explain who he is by exploring where he's from. Charlie's history and personal experience are bound to the coming of age of America, placing international events within a very personal framework. Radio is an award-winning play about the tragic, funny, and impossible dreams we sell ourselves.

Tickets: £8.00/£6.00 concessions



## SOMETHING FISHY

GINNY DAVIS PRODUCTIONS  
WWW.GINNYDAVIS.COM

Sat 12th May 6.00pm  
Sun 13th May 6.00pm  
Mon 14th May 7.00pm  
Tues 15th May 7.00pm  
(1 hour)

Ruth should have the hang of parenting now the kids are teenagers but she never manages to get closer than a step or two behind. Following Edinburgh Fringe sell-outs *Ten Days...* (2008) and *Double Booked* (2010), writer and performer Ginny Davis ("clever and witty" - Scotsman) presents a new episode in the life of a mother muddling through.

Tickets: £9.00/£7.00 concessions

## THEATRE



## TALKING HEADS

DIRECTED BY BRITT FORSBERG

THEATRE 21  
WWW.BRITTFORSBERG.COM

Wed 9th May 6.30pm  
Thurs 10th May 6.30pm  
Fri 11th May 6.30pm  
(1 hour 30 mins)

Alan Bennett's *A Chip in the Sugar* and *A Lady of Letters* are two of his most outstanding Monologues. Theatre 21's Production, directed by Britt Forsberg explores the complex inner lives of two very different characters, seemingly trapped by their circumstances, Bennett takes us behind their 'superficially normal' facades to reveal their desperate and singular struggles for acceptance and connection.

Tickets: £10.00/£8.00 concessions



## THE ALCHEMIST

THE BAREFOOT PLAYERS  
WWW.BAREFOOTPLAYERS.CO.UK

Tues 29th May 7.30pm  
Wed 30th May 7.30pm  
Thurs 31st May 7.30pm  
Fri 1st June 7.30pm  
Sat 2nd June 7.30pm  
(2 hours)

Lovewit flees, leaving a house empty, except for cobwebs, rats and three con-artists, who use the house as a front to swindle and trick their way through a series of gullible customers. Jonson's comedy is revived in roaring 1920s Brighton with back-door antics, ridiculous disguises and titillating burlesque. Be careful you don't get swindled out of your seat.

Tickets: £8.50/£6.50 concessions



# THEATRE



## THE BLACK DOG & OTHER INFLUENCES

THE KNAPPER EXPERIENCE/  
ATOMIC FORCE PRODUCTIONS  
[WWW.THEKNAPPEREXPERIENCE.COM](http://WWW.THEKNAPPEREXPERIENCE.COM)

Sat 12th May 4.30pm  
Sun 13th May 4.30pm  
(1 hour)

An unlikely comedy about managing manic depression. A fragile 30-something, consumed by bipolar disorder, finds himself in therapy. Unable to function, and unwilling to open up, he teases his therapist with a back-story of lies and fantasy. Can therapy still be effective if the therapist can't trust the patient?

Tickets: £8.00/£6.00 concessions



## THE CHEEKY CHAPPIE

BIG BASKET PRODUCTIONS  
[WWW.FIFTEEN-PERCENT.CO.UK](http://WWW.FIFTEEN-PERCENT.CO.UK)

Thurs 26th April 7.30pm  
Fri 27th April 7.30pm  
Sat 28th April 7.30pm  
Sun 29th April 7.30pm

Thurs 3rd May 8.30pm  
Fri 4th May 8.30pm  
Sat 5th May 8.30pm  
Sun 6th May 8.30pm  
(1 hour 30 mins)

'There'll never be another!' Max Miller was the highest paid comedian of his time - but his 'Cheeky' stage persona masked a quiet Brighton man, whose loveless marriage led to an awkward affair and fall from public affection. Dave Simpson's funny and moving play explores the life of a man who made millions laugh during the golden days of variety.

Tickets: £9.50/£7.50 concessions



## TROUSER-WEARING CHARACTERS

ROSE COLLIS  
[WWW.ROSECOLLIS.COM](http://WWW.ROSECOLLIS.COM)

Thurs 3rd May 7.00pm  
Fri 4th May 7.00pm  
Mon 7th May 7.00pm  
Tues 8th May 7.00pm  
Sat 19th May 5.00pm  
Sun 20th May 5.00pm  
(1 hour)

Acclaimed writer and performer Rose Collis unveils her first one-woman (plus banjoleles) cabaret-style show. This original entertainment, devised and performed by one of Brighton's favourite personalities, is a unique mixture of music, history and comedy, featuring stories and songs about her favourite eclectic 'trouser-wearing characters', from Nancy Spain to Colonel Barker and the 'f\*\*king lady' herself, Coral Browne.

Tickets: £8.50/£6.50 concessions

# THEATRE WORKSHOPS



## WINSTON ON THE RUN

FOL ESPOIR  
[WWW.FOLESPOIR.CO.UK](http://WWW.FOLESPOIR.CO.UK)

Wed 23rd May 7.00pm  
Thurs 24th May 7.00pm  
Fri 25th May 6.00pm  
Sat 26th May 6.00pm  
(1 hour)

It's 1899 and escaped prisoner-of-war Winston Churchill is in a fiendish spot of bother - lost in the African savannah, circled by vultures and wanted 'Dead or Alive'. This is the rollicking true story of how Britain's greatest hero defeated the Boers, overcame his demons and grew his first moustache.

Tickets: £8.00/£6.00 concessions



## ACTING & CREATING A CHARACTER

JULIAN CADDY  
[WWW.SWEET-UK.NET/JULIANCADDY](http://WWW.SWEET-UK.NET/JULIANCADDY)

Mon 14th May 8.30pm  
Mon 21st May 8.30pm  
(1 hour 30 mins)

Come and get your teeth into a refreshing new approach to acting training with this Stanislavski-inspired technique. Featuring theory, improvisation and more. Open to all, no matter your background or experience. Based on our successful London workshops. Bring pen and paper.

Tickets: £10.00/£8.00 concessions





## COMEDY



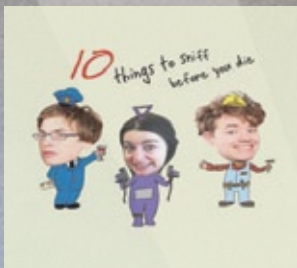
## A KICK IN THE TEETH

CASUAL VIOLENCE! COMEDY  
WWW.CASUALVIOLENCECOMEDY.CO.UK

Fri 25th May 8.45pm  
Sat 26th May 8.45pm  
(1 hour)

Award-winning comedy sketch troupe Casual Violence are in hot pursuit of happiness. Trouble is, the road ahead is littered with deadly boardgames, lost mums, sinister poppymen and lazy detectives. Tales of murder, misery and MB Games in a brand new set of uniquely twisted stories.  
\*\*\*\*\* "Ludicrously inventive" (ThreeWeeks)  
\*\*\*\*\* "A stand-out show" (FringeGuru)  
\*\*\*\* "Massively enjoyable" (UK Comedy Guide)

Tickets: £8.00/£7.00 concessions



## BAD BREAD: 10 THINGS TO SNIFF BEFORE YOU DIE!

BAD BREAD  
WWW.BADBREAD.CO.UK

Fri 18th May 8.30pm  
Sat 19th May 8.30pm  
(1 hour)

Following their 2011 sell-out Edinburgh run, Bad Bread return to Brighton for what might be their last ever show! Mayan prophesy predicts the world will end in 2012, and so with this in mind Bad Bread deliver an hour of sketch comedy in an attempt to tick off everything they've never done before they die.

Tickets: £8.50/£6.50 concessions



## MAE-DAY: I'M NOT WAVING, I'M DROWNING

MAE MARTIN/  
ATOMIC FORCE PRODUCTIONS  
WWW.MAEMARTIN.CA

Thurs 24th May 10.00pm  
Fri 25th May 10.00pm  
Sat 26th May 10.00pm  
(1 hour)

Canadian comedian Mae Martin recently emigrated to England to "find herself". In her eponymous show Mae Day she examines her neurotic visions of the impending apocalypse, her extremely strong feelings about certain celebrities, and her adventures in androgyny.  
\*\*\*\* "Full of the confidence of a veteran comedian" (ScotsGay)  
\*\*\*\* (Three Weeks)

Tickets: £8.00/£6.00 concessions



## PIG-WITH-THE-FACE-OF-A-BOY

XYLOPHONE PRODUCTIONS/  
ATOMIC FORCE PRODUCTIONS  
WWW.PIGFACEBOY.CO.UK

Thurs 10th May 10.15pm  
Fri 11th May 10.15pm  
Sat 12th May 10.45pm  
(1 hour)

Musical comedy from the world's best neo-post-post-music hall anti-folk band. Dark songs, useful songs and silly songs. Donald Newholm plucks and Dan Woods on accordion. Featuring their hit A Complete History of the Soviet Union, Arranged to the Melody of Tetris (2 million YouTube views). "A better hour of comic songs may be hard to find" (The Skinny)

Tickets: £8.00/£6.00 concessions



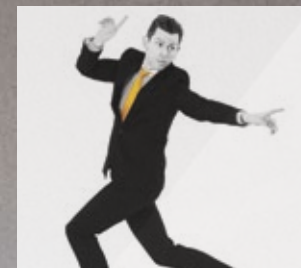
## SUN SALUTATIONS 101™

TIMBERLINA  
WWW.TIMBERLINA.CO.UK

Sat 5th May 12.00pm  
Sun 6th May 12.00pm  
Mon 7th May 12.00pm  
(2 hours 30 mins)

Yoga drop in with Timberlina. Relax, escape the pretentious tyranny of modern life. Stay as long or as little as you like; expect empathy, friendly conversation, a comforting stretch... and maybe a drink. Find Yoga pretentious? So do we. 6 x 20 minute sets allow you to slip in and out. "The Queen of alternative style" (Time Out)

Tickets: Donations welcome



## THE IN CROWD WITH DAVID MILLS

DAVID MILLS  
WWW.ITSDAVIDMILLS.COM

Sun 6th May 10.15pm  
Sat 12th May 9.30pm  
(1 hour)

Enjoy droll raconteur, David Mills and his acid-tongued rants in this sharp and signature comedy cabaret act. Featuring vicious celeb gossip and a rousing gospel medley! "David Mills is heading for the big time. His talent for whip-cracking one liners is audaciously thrilling. Most definitely one to watch!" (Time Out)  
"His ruthless, cynical bitchiness is hysterically funny!" (SF Bay Times)

Tickets: £10.00/£8.00 concessions



# CABARET



## HOW-TO READ MINDS & INFLUENCE PEOPLE

DOUG SEGAL  
WWW.DOUGSEGAL.CO.UK

Fri 25th May 7.15pm  
Sat 26th May 7.15pm  
Sun 27th May 7.15pm  
(1 hour)



"Imagine if Derren Brown was funny" (Evening Standard). Last year's sell out hit returns! A mind reading show unlike any other! Learn to predict the lottery, read minds, detect lies and more.

\*\*\*\* (Edinburgh Evening News)  
\*\*\*\*\* (What's On Stage)  
\*\*\*\*\* (Fringe Guide)  
\*\*\*\* (The Skinny)  
\*\*\*\* (Fringe Guru)  
\*\*\*\*\* (The Public Reviews)  
\*\*\*\* (Fringe Review)  
\*\*\*\* (Edinburgh Spotlight)

Tickets: £7.50/£5.00 concessions



## PROFESSOR ELEMENTAL'S GREAT AND SECRET SHOW

PROFESSOR ELEMENTAL  
WWW.PROFESSORELEMENTAL.COM

Thurs 3rd May 10.00pm  
Fri 4th May 10.00pm  
Sat 5th May 10.00pm  
Fri 18th May 10.00pm  
(1 hour 30 mins)

Join the Professor for a night of steam-powered hip hop, comedy and surprises! With each show entirely unique, Professor Elemental will introduce his friends from the worlds of music, comedy and the peculiar to entertain and delight. Consider yourself invited to an unforgettable night of tea, monkey butlers and splendid fun at Elemental Manor! More info on the website.

Tickets: £8.50/£6.50 concessions



## O FRABJUOUS DAY

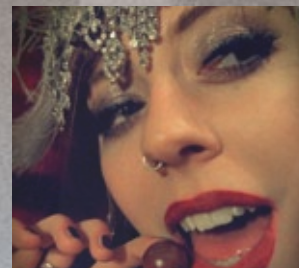
COSMO SHELDRAKE,  
BEN MACFADYEN & LUKE DEANE

Sat 19th May 10.00pm  
(1 hour)

A nonsensical musical expedition, from frolicking with the jabberwocky, drinking tea with the snark to feasting with the raven. A multi-instrumental celebratory mashup featuring Ben Macfadyen, Luke Deane and Cosmo, Brighton's inimitable gentleman beat-boxer.

Tickets: £6.00/£5.00 concessions

# OUR FRIENDS



## OUR FRIENDS AT THE MESMERIST PRESENT... THE MIRACLE BERRY MYSTERY PARTY

BORDELLO BOEHME  
AT THE MESMERIST

Thurs 3rd May 7.30pm  
Thurs 17th May 7.30pm  
Thurs 24th May 7.30pm

A dinner party like no other. A private dining room experience where 4 courses of fine food and drink are served with delectable turns from some of Brighton's tastiest late night performers, climaxing with your very own Miracle Berry, a mysterious fruit discovered in 18th century Africa, that once eaten makes even the bitterest foods taste deliciously sweet!

www.labordelloboheme.com  
Twitter: @labordello  
Facebook: www.facebook.com/labordelloboheme  
Suitable for ages 18+

Entrance fee: £30.00

## THE MARLBOROUGH IS FOR LIFE, NOT JUST FOR THE FRINGE...

Our venue is home to amazing events of all kinds, year round and we would love to see you at more of them.

So keep in touch!

You can join our mailing list:  
www.eepurl.com/Osk3.qr.30



Marlborough Pub & Theatre



@marlboroughbtn

Visit our website: [www.marlboroughtheatre.org.uk](http://www.marlboroughtheatre.org.uk)





# SUPPORT THE MARLBOROUGH THEATRE

The Marlborough Theatre is run by a not-for-profit company and receive no funding. We support all kinds of artists/companies all year round giving very low cost rehearsal space, producing advice, marketing assistance which allows artists/companies to develop new work and get it seen. A major emphasis of what we do is giving new artists and companies the chance to produce their first work, for it be seen and for them to continue developing.

"The support system they have installed to help us thrive as a new company has been invaluable." Tralibla Theatre - The Rotten Wedding, Sellout Show Fringe 2011.

We are always looking for ways to improve the experience for our audience and the artists/companies that use our space - for instance, we invested in much needed air conditioning this year. Phew!

Recently, the crackle in our prehistoric speaker system has graduated to the occasional roar - it needs replacing.



Our aim is to raise £1500 to upgrade the technical equipment in the theatre, to create a better experience for you and for the artists using our space year round.

We are creating a pledge mural in the Marlborough to record the names of wonderful donators and where everyone can see what a bunch of art supporting legends you are!

## Pledge £25 or more...

...and we will give you an entry on the pledge wall.

## Pledge £50 or more...

...and we will give you two tickets for a Marlborough show in 2012 and we will give you an entry on the pledge mural.

## Pledge £100 or more...

...and we will give you two tickets for a Marlborough show in 2012, a Hendricks gin served in a china teacup on arrival and an entry on the pledge mural.

## Pledge £250 or more...

...and we will offer you two free tickets for a Marlborough show in 2012, a film screening of a film of your choice for up to 30 people, a Hendricks gin on arrival and an entry on the pledge mural.

## Pledge £500 or more...

...and we will give you a private party at the Marlborough Theatre for up to 50 guests, two free tickets for a Marlborough show in 2012, a Hendricks gin on arrival and an entry on the pledge mural.

## You can donate in the following ways:

- By visiting [www.wefund.com](http://www.wefund.com) and searching for 'Marlborough Theatre'.



- By writing a cheque made payable to 'Marlborough Productions' and sending it to: The Marlborough, 4 Princes Street, Brighton, BN2 1RD.
- Or you can simply drop some change into our collection box, at the theatre (where, if you like your donation will be recorded) when you come and see a cracking show.

# HIRE THE MARLBOROUGH



The Marlborough Theatre is available to hire year round for:

- Live performances - theatre, comedy, music, spoken word - we have had it all here!
- Rehearsals
- Meetings, seminars & workshops
- Private parties

We also have a large green room perfect for smaller meetings, seminars and rehearsals.

The theatre has a capacity of 60 seated and 80 standing and we can provide front of house, box office and technical support.

The green room has a capacity of 30 seated.

Please contact David and Tarik at [marlboroughtheatre@drinkinbrighton.co.uk](mailto:marlboroughtheatre@drinkinbrighton.co.uk) for more detail

## FRINGE DRINKS DEAL!

The lovely folks downstairs in the Marlborough Pub are very happy to be able to offer Fringe ticket holders a **20% discount** (Happy Hour Prices) on selected drinks throughout the Festival.

So we encourage you to hang out, stick around and make yourself comfortable!



the NIGHTINGALE

THE MARLBOROUGH  
THEATRE

BRIGHTON  
FRINGE  
2012

# DIP YOUR TOE

WWW.DIPYOURTOE.CO.UK

# DIP YOUR TOE

See Brighton get changed this May, as six bespoke Victorian-style bathing machines appear at some of the city's most iconic landmarks. Created to protect the modesty of coastal bathers, bathing machines were a feature of our shores for nearly two hundred years. Now **the Nightingale** with **Brighton Fringe** and **The Marlborough Theatre** are returning these fascinating contraptions to the streets of Brighton culminating in a singularly seaside performance spectacular at Madeira Drive. Each bathing machine will be the inspiration and the venue for a series of brand new performances by South East artists, creating unforgettable experiences for the city and its visitors, every weekend in May. The artists are also working closely with local community groups and schools to make their own special shows as part of Dip Your Toe.

Catch up with the artists and team by reading our blog at [www.dipyourtoe.co.uk](http://www.dipyourtoe.co.uk)



Dip Your Toe



@DipYourToe

## THE BOAT PROJECT

Dip Your Toe was created to celebrate the maiden voyage of Lone Twin's **The Boat Project**. The boat, crafted by a fearlessly adventurous team of boat builders and volunteers, is a living archive of people's stories and lives; a 30ft seafaring vessel made from donated wooden items.

Come and see the boat moored at Brighton Marina between the 19th and the 27th of May. There are a whole range of activities taking place there and elsewhere in the city during her time here.

To find out more go to [www.theboatproject.com](http://www.theboatproject.com)

The Boat Project is part of Artists Taking the Lead, a series of 12 public art commissions across the UK to celebrate the London 2012 Cultural Olympiad. The Boat Project is the winning commission for the South East region and is funded by Arts Council England.



LOTTERY FUNDED



Brighton & Hove  
City Council supported

Drink in  
brighton  
.co.uk

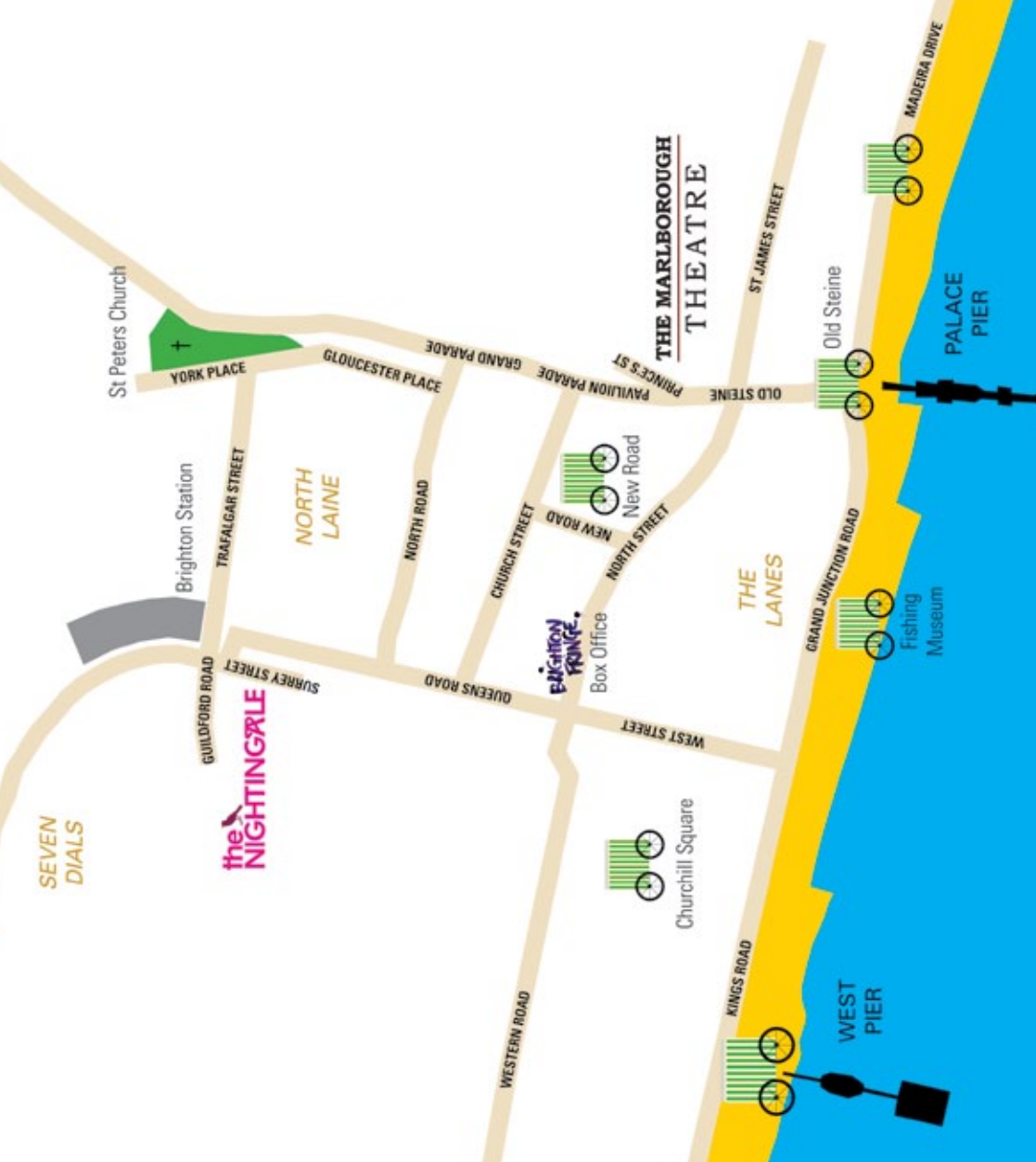
WWW.DIPYOURTOE.CO.UK

ONLINE BOOKING [WWW.BRIGHTONFRINGE.ORG](http://WWW.BRIGHTONFRINGE.ORG)  
IN PERSON BRIGHTON FRINGE BOX OFFICE ON NORTH STREET



# DIP YOUR TOE

THE BATHING MACHINES  
WILL APPEAR AT THESE  
LOCATIONS AT VARIOUS  
TIMES EVERY WEEKEND  
IN MAY. CHECK OUR  
CALENDAR LISTINGS  
FOR DETAILS OR VISIT  
[WWW.DIPYOURTOE.CO.UK](http://WWW.DIPYOURTOE.CO.UK)



## A SMALL MUSEUM OF DISPLACED SEA

THE KARAVAN ENSEMBLE

Dip Your Toe at Old Steine Gardens, Churchill Square  
and at Madeira Drive

After their sell-out show *A Ship of Fools* and award-winning *Anima*, The Karavan Ensemble is thrilled to embark on a new journey, carrying the sea across Brighton in a reconstructed transient bathing machine. Working with older people from the South East recollecting their memoirs between coast and sea, past and present, our migrating performance carries the sea within.

Running Time: Continuous. Suitable for all ages.  
Free (Donations).

## GREENANDPLEASANTLAND

FANSHEN

Dip Your Toe at New Road



*Find the castle. Solve the riddle. Beat the dragon. Use the force. Change the world?* Green and Pleasant Land fuses physical theatre, live music and folk traditions in an epic adventure for audiences aged 10 and upwards. Join us on a quest powered by bicycle-generators through lands of curious customs and peoples of peculiar habits, to find a happier, greener future.

Running Time: 40 minutes. Suitable for all ages.  
Free (Donations).



## SWIMMING IN THE PERSIAN GULF

BANDBAZI

Dip Your Toe at Brighton Station,  
New Road and at Madeira Drive

Take a swim on the exotic side; borrow a human book and learn about the freedom of swimming. BandBazi bring you the woman's view from cultures East, West and somewhere in between. Philippa Vafadari and Dan Bridge, with women from the Iranian Community Group and young female artists from Brighton and Hove, bring you a multi-media installation that lets you take a peek behind the veil. Have your preconceptions blown out of the water.

Running Time: Continuous.  
Suitable for all ages.  
Free (Donations).

ONLINE BOOKING [WWW.BRIGHTONFRINGE.ORG](http://WWW.BRIGHTONFRINGE.ORG)  
IN PERSON BRIGHTON FRINGE BOX OFFICE ON NORTH STREET

[WWW.DIPYOURTOE.CO.UK](http://WWW.DIPYOURTOE.CO.UK)





## STRANDLINE

AVIS COCKBILL & DAVID PARKER  
Dip Your Toe at New Road

Images inspired by the seaside are transformed on a giant kaleidoscope. The beautiful patterns created are choreographed to an audio soundtrack and take the viewer on a dream like journey that examines our relationship with the sea. Inspired by the mythological creatures Selkies, Strandline tells a visual story using the built and natural environment of the Brighton coast.

Running Time: Continuous. Suitable for all ages.  
Free (Donations).



## THE DEPARTMENT OF UNRELIABLE MEMOIRS

STILLPOINT THEATRE  
Dip Your Toe at New Road

Make an appointment with our hostesses to retrieve a half-forgotten moment from a past you may have had. Created and performed by Emma Kilbey and Rachel Blackman, The Department of Unreliable Memoirs offers a brief and intensely playful encounter for a single audience member. Rachel and Emma are also delighted to be working alongside LGBT youth group Allsorts to create something magical for Dip Your Toe.

Running Time: 5 minutes. Suitable for ages 15+.  
Spaces limited, advance booking available. Entry £4.



## THE TERRIBLE SHAMAN

INCONVENIENT SPOOF  
Dip Your Toe at Madeira Drive

Terrible Shamans have arrived from far off lands and everything to them is astounding. With painted sticks and ceremonial robes they wield their magic wares to summon the spirits within all things, bringing comfort and joy to whomever has the heart to receive it. Bewitching and uplifting, these three exotic priests invite you into their fold. Dare you enter?

Running Time: Continuous. Suitable for all ages.  
Free (Donations).



## VIVASCOPE

SETH KRIEBEL & ZOE BOURAS  
Dip Your Toe at West Pier and at Madeira Drive

Kriebel & Bouras have created an unusual machine for seeing. Small audiences enter a darkened room to experience a unique combination of a camera obscura and live performance. A narrator inside the machine turns the gaze of the camera obscura on performers outside, creating images which appear magical even to the 21st century eye. Vivascope will also host performances by GCSE drama students from Dorothy Stringer School.

Running Time: 15 minutes. Suitable for ages 15+  
Spaces limited, advance booking available. Entry £4



## PUPPET PARAMOUR AND SOCK PUPPET SIDE SHOW

BOOGALOO STU  
Dip Your Toe at New Road, Churchill Square,  
The Hurly Burly and at Madeira Drive

Step into a surreal world from a bygone era with Boogaloo Stu, as he gets up-close and personal with Puppet Paramour: a one-to-one session of craft activity and psychic surgery to create your ideal partner in sock-puppet form. Stu is also working with children from Balfour Primary School, to develop and produce their own series of sock puppet mini-musicals.

Running Time: 10 minutes. Suitable for ages 15+.  
Spaces limited, advance booking available. Entry £4



## KISSING THE GUNNER'S DAUGHTER

GRIST TO MILL  
Dip Your Toe at the Fishing Museum  
and at Madeira Drive

The interior of a bathing machine is transformed into an otherworldly delight, with a specially composed 'poetic drama' and soundscape from Dorothy Max Prior and Foz Foster. See bathers, sailors, sea monsters and mermaids exquisitely animated by lead artist Isobel Smith, using manipulated light and puppetry. Creations by children from St. Luke's Primary School will be displayed alongside performances at Brighton Fishing Museum.

Running Time: 20 minutes. Suitable for all ages.  
Free (Donations).

## HARMFUL HYDROCRACKER WITH THE NIGHTINGALE & BRIGHTON DOME

Dip Your Toe at New Road

Harmful is the first production from a new Youth Theatre set up by local site specific theatre company Hydrocracker. Open to anyone aged 13-19, the Youth Theatre is being established with The Nightingale and The Dome and will be looking to recruit this autumn. Free (Donations)



DOROTHY STRINGER SCHOOL PERFORMANCES			VIVASCOPE SETH KRIEBEL & ZOE BOURAS			ADVANCE BOOKING AVAILABLE £4		
SAT 5 MAY	SUN 6 MAY	MON 7 MAY	SAT 12 MAY	SUN 13 MAY	SAT 19 MAY	SUN 20 MAY	SAT 26 MAY	SUN 27 MAY
WEST PIER	WEST PIER	WEST PIER	WEST PIER	WEST PIER	WEST PIER	WEST PIER	MADEIRA DRIVE	MADEIRA DRIVE
SEE WEBSITE FOR TIMES AND BOOKING DETAILS			13:00, 13:20, 13:40, 14:30, 14:50, 15:10, 16:00, 16:20, 16:40					

PUPPET PARAMOUR AND SOCK PUPPET SIDE SHOW BOOGALOO STU						ADVANCE BOOKING AVAILABLE £4		BALFOUR SCHOOL PERFORMANCES	
--	--	--	--	--	--	------------------------------	--	-----------------------------	--

SAT 5 MAY	SUN 6 MAY	MON 7 MAY	SAT 12 MAY	SUN 13 MAY	SAT 19 MAY	SUN 20 MAY	SAT 26 MAY	SUN 27 MAY
NEW ROAD	HURLY BURLY	HURLY BURLY	HURLY BURLY	HURLY BURLY	CHURCHILL SQUARE	CHURCHILL SQUARE	MADEIRA DRIVE	MADEIRA DRIVE
13:00, 13:15, 13:30, 13:45, 14:00, 14:15, 14:45, 15:00, 15:15, 15:30, 15:45	14:00, 14:15, 14:30, 14:45,16:45, 17:00, 17:15, 17:30, 17:45, 18:00, 19:30, 19:45, 20:00, 20:15, 20:45, 21:00, 21:15	15:00, 15:15, 15:30, 15:45, 16:00, 16:15, 16:45, 17:00, 17:15, 17:30, 17:45	14:00, 14:15, 14:30, 14:45,16:45, 17:00, 17:15, 17:30, 17:45, 18:00, 19:30, 19:45, 20:00, 20:15, 20:45, 21:00, 21:15	15:00, 15:15, 15:30, 15:45, 16:00, 16:15, 16:45, 17:00, 17:15, 17:30, 17:45	13:00, 13:15, 13:30, 13:45, 14:00, 14:15, 14:30, 15:00, 15:15, 15:30, 15:45, 16:00, 16:15	13:00, 13:15, 13:30, 13:45, 14:00, 14:15, 14:30, 15:00, 15:15, 15:30, 15:45, 16:00, 16:15	13:00, 13:20, 13:40, 14:00, 14:20, 14:40, 15:00, 15:20, 15:40, 16:00, 16:20, 16:40	13:00, 13:15, 13:30, 13:45, 14:00, 14:15, 14:30, 15:15, 15:30, 15:45, 16:00, 16:15, 16:30, 16:45
							FREE (DONATIONS)	

KISSING THE GUNNER’S DAUGHTER GRIST TO THE MILL					ADVANCE BOOKING AVAILABLE FREE (DONATIONS)			
SAT 5 MAY	SUN 6 MAY	MON 7 MAY	SAT 12 MAY	SUN 13 MAY	SAT 19 MAY	SUN 20 MAY	SAT 26 MAY	SUN 27 MAY
FISHING MUSEUM 13:00, 13:40, 14:20, 15:00							MADEIRA DRIVE	MADEIRA DRIVE

SWIMMING IN THE PERSIAN GULF BANDBAZI					NO ADVANCE BOOKING FREE (DONATIONS)			
SAT 5 MAY	SUN 6 MAY	MON 7 MAY	SAT 12 MAY	SUN 13 MAY	SAT 19 MAY	SUN 20 MAY	SAT 26 MAY	SUN 27 MAY
NEW ROAD	BRIGHTON STATION	BRIGHTON STATION	BRIGHTON STATION	BRIGHTON STATION	BRIGHTON STATION	BRIGHTON STATION	MADEIRA DRIVE	MADEIRA DRIVE
13:00 - 16:00	14:00 - 17:00	14:00 - 17:00	14:00 - 17:00	14:00 - 17:00	14:00 - 17:00	14:00 - 17:00	14:00 - 17:00	14:00 - 17:00

A SMALL MUSEUM OF DISPLACED SEA KARAVAN ENSEMBLE					NO ADVANCE BOOKING FREE (DONATIONS)			
SAT 5 MAY	SUN 6 MAY	MON 7 MAY	SAT 12 MAY	SUN 13 MAY	SAT 19 MAY	SUN 20 MAY	SAT 26 MAY	SUN 27 MAY
OLD STEINE	OLD STEINE	OLD STEINE	CHURCHILL SQUARE	CHURCHILL SQUARE	OLD STEINE	OLD STEINE	MADEIRA DRIVE	MADEIRA DRIVE
12.00 - 15.00, 16:00 - 17:00								

STRANDLINE			THE DEPARTMENT OF UNRELIABLE MEMOIRS		GREENAND PLEASANTLAND		THE TERRIBLE SHAMAN	
SAT 5 MAY	SUN 6 MAY	MON 7 MAY	SAT 12 MAY	SUN 13 MAY	SAT 19 MAY	SUN 20 MAY	SAT 26 MAY	SUN 27 MAY
NEW ROAD	NEW ROAD	NEW ROAD	NEW ROAD	NEW ROAD	NEW ROAD	NEW ROAD	MADEIRA DRIVE	MADEIRA DRIVE
AVIS COCKBILL & DAVID PARKER	AVIS COCKBILL & DAVID PARKER	AVIS COCKBILL & DAVID PARKER	STILLPOINT THEATRE	STILLPOINT THEATRE	FANSHEN	FANSHEN	INCONVENIENT SPOOF	INCONVENIENT SPOOF
NO ADVANCE BOOKING	NO ADVANCE BOOKING	NO ADVANCE BOOKING	ADVANCE BOOKING AVAILABLE	ADVANCE BOOKING AVAILABLE	NO ADVANCE BOOKING	NO ADVANCE BOOKING	NO ADVANCE BOOKING	NO ADVANCE BOOKING
FREE (DONATIONS)	FREE (DONATIONS)	FREE (DONATIONS)	£4	£4	FREE (DONATIONS)	FREE (DONATIONS)	FREE (DONATIONS)	FREE (DONATIONS)
13:00 - 17:00	13:00 - 17:00	13:00 - 17:00	WITH ALLSORTS: 13:00 - 15:30; STILLPOINT THEATRE: 16:00, 16:10, 16:20, 16:30, 16:40, 17:00, 17:10, 17:20, 17:30, 17:40, 18:00, 18:10, 18:20	WITH ALLSORTS: 13:00 - 15:30; STILLPOINT THEATRE: 16:00, 16:10, 16:20, 16:30, 16:40, 17:00, 17:10, 17:20, 17:30, 17:40, 18:00, 18:10, 18:20	13:00 - 13.40 AND 14.30 - 15.10	13:00 - 13.40 AND 14.30 - 15.10	13:00 - 17:00	13:00 - 17:00

HARMFUL	NO ADVANCE BOOKING	TALKS BY HISTORIAN KATHRYN FERRY
SAT 19 MAY	SUN 20 MAY	JOIN SEASIDE HISTORIAN KATHRYN FERRY AS SHE REVEALS THE HISTORY OF THE BATHING MACHINE, AND EXPLORES WHAT MAKES OUR SEASIDE ARCHITECTURE DISTINCTIVE. KATHRYN FERRY WILL BE AT THE OLD COURTROOM, CHURCH STREET, ON THE 18TH AND THE 25TH OF MAY GIVING TALKS AT 2PM AND 4PM. ADVANCE BOOKING AVAILABLE.
NEW ROAD	NEW ROAD	
FREE (DONATIONS)	FREE (DONATIONS)	
17.30	17.30	



# PUNKTURED

BODY PIERCING

35 GARDNER STREET, BRIGHTON  
TELEPHONE: 01273 688144

GIFT  
VOUCHERS  
AVAILABLE

OPEN MON-SAT  
10.30AM-6PM  
SUN 12PM-5PM

- FRIENDLY, RELAXED ENVIRONMENT
- FREE CONSULTATION, NO OBLIGATION
- MALE AND FEMALE PIERCERS
- MORE THAN 20 YEARS EXPERIENCE
- HUGE RANGE OF FANTASTIC JEWELLERY
- FROM £18 INCLUDING AFTERCARE

WWW.PUNKTURED.CO.UK

IMPORTANT: THE PIERCINGS ON THIS DOG ARE NOT REAL



## bikram's hot yoga

*all levels welcome*

gift certificates  
available!



- revitalise body & mind
- improve strength & flexibility
- manage weight loss
- heal sports & other injuries
- detox & cleanse
- ease back pain
- reduce stress

intro special  
two weeks unlimited classes £20

£20 PER DAY  
CARPET  
CLEANER

DRILLS  
FROM ONLY  
£39.99

FREE PACK  
5 BRUSHES  
WHEN YOU SPEND  
OVER £20



2.5  
PAINT  
ONLY  
£11.99

don't move, improve...

# KEMPTOWN TOOLS

46-47 Georges St, Brighton BN2 1RJ • Tel: 01273 672202

01273 733 960  
studio@bikraminthelanes.com  
www.bikraminthelanes.com

20 North Street  
Huntingdon House, 4th Floor  
Brighton BN1 1EB



# CALENDAR

Key: **The** - Theatre **Wor** - Workshop **Com** - Comedy **Cab** - Cabaret **Mus** - Music

DATE	TIME	EVENT
Thu 26 April	7.30pm	The Cheeky Chappie <b>The p10</b>
Fri 27 April	7.30pm	The Cheeky Chappie <b>The p10</b>
Sat 28 April	7.30pm	The Cheeky Chappie <b>The p10</b>
Sun 29 April	7.30pm	The Cheeky Chappie <b>The p10</b>
Thurs 3 May	7.00pm 8.30pm 10.00pm	Trouser-Wearing Characters <b>The p11</b> The Cheeky Chappie <b>The p10</b> Professor Elemental's Great and Secret Show <b>Cab p14</b>
Fri 4 May	5.00pm 7.00pm 8.30pm 10.00pm	Domestic Bits <b>The p7</b> Trouser-Wearing Characters <b>The p11</b> The Cheeky Chappie <b>The p10</b> Professor Elemental's Great and Secret Show <b>Cab p14</b>
Sat 5 May	12.00pm 5.00pm 7.00pm 8.30pm 10.00pm	Sun Salutations 101 <sup>TM</sup> <b>Com p13</b> Domestic Bits <b>The p7</b> A Right Pair <b>The p6</b> The Cheeky Chappie <b>The p10</b> Professor Elemental's Great and Secret Show <b>Cab p14</b>
Sun 6 May	12.00pm 5.00pm 7.00pm 8.30pm 10.15pm	Sun Salutations 101 <sup>TM</sup> <b>Com p13</b> Domestic Bits <b>The p7</b> A Right Pair <b>The p6</b> The Cheeky Chappie <b>The p10</b> The In Crowd <b>Com p13</b>
Mon 7 May	12.00pm 7.00pm 8.30pm	Sun Salutations 101 <sup>TM</sup> <b>Com p13</b> Trouser-Wearing Characters <b>The p11</b> 15% of the Seagull <b>The p6</b>
Tues 8 May	7.00pm 8.30pm	Trouser-Wearing Characters <b>The p11</b> 15% of the Seagull <b>The p6</b>
Wed 9 May	6.30pm 8.30pm	Talking Heads <b>The p9</b> Radha is Looking Good / The Clock <b>The p8</b>
Thurs 10 May	6.30pm 8.30pm	Talking Heads <b>The p9</b> Radha is Looking Good / The Clock <b>The p8</b>
Fri 11 May	6.30pm 8.30pm	Talking Heads <b>The p9</b> Radha is Looking Good / The Clock <b>The p8</b>
Sat 12 May	4.30pm 6.00pm 8.00pm 9.30pm	The Black Dog & Other Influences <b>The p10</b> Something Fishy <b>The p9</b> A Right Pair <b>The p6</b> The In Crowd <b>Com p13</b>
Sun 13 May	4.30pm 6.00pm 8.00pm	The Black Dog & Other Influences <b>The p10</b> Something Fishy <b>The p9</b> A Right Pair <b>The p6</b>
Mon 14 May	7.00pm 8.30pm	Something Fishy <b>The p9</b> Acting and Creating a Character <b>Wor p15</b>
Tue 15 May	7.00pm 9.00pm	Something Fishy <b>The p9</b> Rachael's Café <b>The p8</b>

DATE	TIME	EVENT
Wed 16 May	7.00pm 9.00pm	Lilies <b>The p7</b> Rachael's Café <b>The p8</b>
Thurs 17 May	7.00pm 9.00pm	Lilies <b>The p7</b> Rachael's Café <b>The p8</b>
Fri 18 May	7.00pm 8.30pm 10.00pm	Lilies <b>The p7</b> Bad Bread: 10 Things to Sniff Before You Die! <b>Com p12</b> Professor Elemental's Great and Secret Show <b>Cab p14</b>
Sat 19 May	3.00pm 5.00pm 6.30pm 8.30pm 10.00pm	Radio <b>The p8</b> Trouser-Wearing Characters <b>The p11</b> Lilies <b>The p7</b> Bad Bread: 10 Things to Sniff Before You Die! <b>Com p12</b> O Frabjuous Day! <b>Mus p15</b>
Sun 20 May	3.00pm 5.00pm 6.45pm 8.30pm	Radio <b>The p8</b> Trouser-Wearing Characters <b>The p11</b> Her Right Mind <b>The p7</b> Deckchairs <b>The p6</b>
Mon 21 May	6.45pm 8.30pm	Her Right Mind <b>The p7</b> Acting and Creating a Character <b>Wor p</b>
Tues 22 May	6.45pm 8.30pm	Her Right Mind <b>The p7</b> Radio <b>The p8</b>
Wed 23 May	7.00pm 8.30pm	Winston On The Run <b>The p11</b> Radio <b>The p8</b>
Thurs 24 May	7.00pm 8.30pm 10.00pm	Winston On The Run <b>The p11</b> Radio <b>The p8</b> Mae-Day: I'm Not Waving, I'm Drowning <b>Com p12</b>
Fri 25 May	6.00pm 7.15pm 8.45pm 10.00pm	Winston On The Run <b>The p11</b> How-to Read Minds & Influence People <b>Cab p14</b> A Kick in the Teeth <b>Com p12</b> Mae-Day: I'm Not Waving, I'm Drowning <b>Com p12</b>
Sat 26 May	4.00pm 6.00pm 7.15pm 8.45pm 10.00pm	Deckchairs <b>The p6</b> Winston On The Run <b>The p11</b> How-to Read Minds & Influence People <b>Cab p14</b> A Kick in the Teeth <b>Com p12</b> Mae-Day: I'm Not Waving, I'm Drowning <b>Com p12</b>
Sun 27 May	4.00pm 7.15pm	Deckchairs <b>The p6</b> How-to Read Minds & Influence People <b>Cab p14</b>
Tues 29 May	7.30pm	The Alchemist <b>The p9</b>
Wed 30 May	7.30pm	The Alchemist <b>The p9</b>
Thurs 31 May	7.30pm	The Alchemist <b>The p9</b>
Fri 1 June	7.30pm	The Alchemist <b>The p9</b>
Sat 2 June	7.30pm	The Alchemist <b>The p9</b>